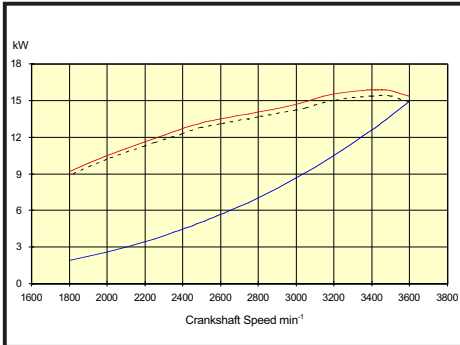
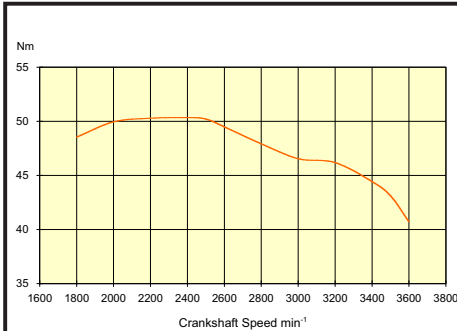


Technical Data

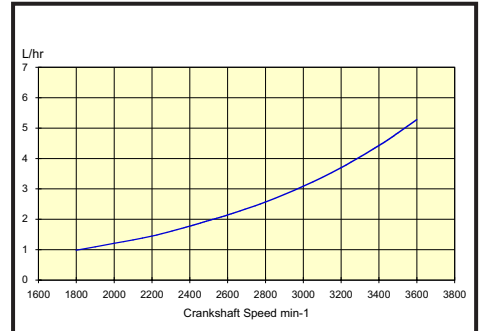
3YM20 Power



3YM20 Torque

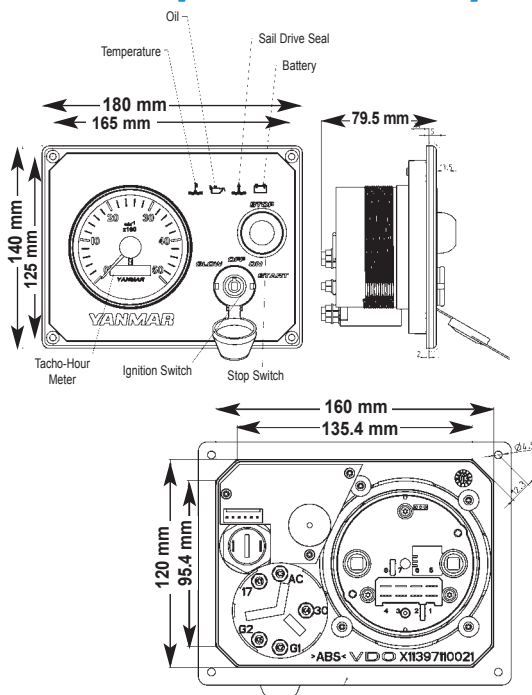


3YM20 Fuel Consumption



Output is according to ISO 8665
Output include +3% tolerance
Data may be changed without notice

The compact control panel



Visit www.yanmarmarine.com
for details of the Yanmar diesels range

SPECIFICATIONS SUMMARY

Yanmar type	YM Series 3YM20 & 3YM20C
Power (crankshaft)	15.3 kW (21 HP) @ 3600 rpm
Full throttle operating speed	3200-3600 rpm
Displacement	0.854 litre (52 cu in)
Bore x stroke	70 mm x 74 mm (2.8 in x 2.9 in)
Cylinders	3
Combustion system	indirect injection, swirl pre-combustion chamber
Alternator	60 A (80 A option)
Cooling system	Fresh water cooling with heat exchanger
Transmission 3YM20	KM2P-1 constant mesh with servo-cone clutch
Reduction ratios	(ahead/astern) 2.21/3.06, 2.62/3.06 and 3.22/3.06
Continuous rating prop speed	(ahead) 1580 rpm, 1332 rpm and 1083 rpm
Direction of rotation	Crankshaft counterclockwise / Propshaft clockwise viewed from stern
Transmission 3YM20C	SD20 Saildrive constant mesh with dog clutch
Reduction ratios	(ahead/astern) 2.64/2.64
Continuous rating prop speed	1321 rpm
Direction of rotation	Input shaft counterclockwise / Propshaft counterclockwise viewed from stern
Dry weight 3YM20	120 kg (264.6 lbs)
Dry weight 3YM20C	144 kg (317.5 lbs)
Height	528 mm (20.8 in) without Saildrive
Length	693 mm (27.3 in)
Width	463 mm (18.2 in)
Environmental	EPA Tier 2 and BSO/SAV stage 2 compliant

Specifications and data were accurate at time of printing, but may be subject to change by the manufacturer without notice.

THE DIESEL ADVANTAGE

YANMAR MARINE INTERNATIONAL B.V. Brugplein 11, 1332 BS Almere-de Vaart, The Netherlands
YANMAR MARINE USA CORP. 101 International Parkway Adairsville, Georgia 30103, USA
YANMAR ASIA (SINGAPORE) PTE. 4 Tuas Lane Singapore 638613
YANMAR CO., LTD. 5-3-1 Tsukaguchi - Honmachi, Amagasaki Japan

YMI/3YM20-200403 - Printed in EC - Copyright 2004 Yanmar Marine International BV, PO Box 30112, 1303 AC Almere, The Netherlands.



The Quiet Revolution

21 HP
15.3 kW

3YM20
3YM20C

Yanmar Power Extra Performance

- The very latest diesels technology, embodied in an all-new 0.854 litre, three-cylinder engine, developing 21 HP (15.3 kW) at 3,600 rpm
- Matched transmission options, including Saildrive with patented dual-seal diaphragm and water sensor
- Whisper quiet, smooth running and with extremely low vibration
- Simplified maintenance by locating the sea-water pump, fuel filter, oil change and dip stick together near the engine front
- 60 amp alternator as standard or 80 amp option to meet even heavier demands
- Fully compliant with EPA Tier 2 emissions regulations and BSO/SAV stage 2 compliant

The latest lightweight propulsion developments from diesels leader Yanmar are the all-new 3YM20 and saildrive 3YM20C. They are even quieter than the models they replace. They are incredibly smooth and vibration-free. There is more torque. And these powerful three-cylinder engines are low emissions certified. This is best-in-class auxiliary power for sailboats: tough, reliable primary power for small motor craft.

THE DIESEL ADVANTAGE

YANMAR
marine





"Total confidence in Yanmar"

Leading sailing holiday company Sunsail operates over 1,200 charter craft from nearly 40 sunshine bases worldwide. The fleet uses 1,300 Yanmar diesels – some boats are twin-engined.

Matt West, Sunsail's managing director for Europe, says: *"Quite simply, we specify Yanmar and have done for years."*

"With upwards of 60,000 customers per season we have to be sure that everything on board works to a consistently high standard. And we have total confidence in Yanmar engines."

Best-in-Class Diesel Power

Yanmar Marine is a multi-national company dedicated to the needs of the boating industry and its customers. The range of Yanmar diesels, from 9HP right through to 900HP, is renowned for product dependability and longevity, with best-in-class power to weight ratios.

The naturally-aspirated 3YM20 and saildrive 3YM20C continue the Yanmar tradition of providing boaters with superior technology – quiet, compact power to be relied upon.

MORE & LESS

More displacement, more torque, more amps, yet even quieter, with less smoke than ever, EPA Tier 2 and BSO/SAV stage 2 compliant. The flat output curve allows you to choose the propeller size to best match your boating application.

STILL MORE

More power in less space from this compact three-cylinder diesel. More performance without increasing weight. More comfort through low noise levels and lack of vibration. This is best-in-class boating.

ALL NEW

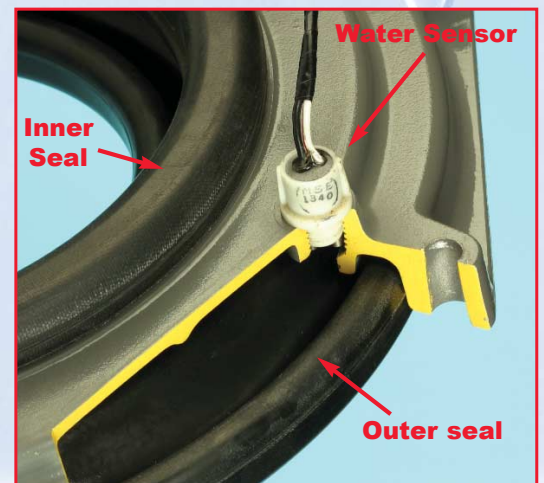
Completely redesigned cylinder block and combustion system for optimised performance and maximum economy. New compact control panel, new injection pump and new electric stop solenoid.

CONSISTENT

Consistently high-quality support from Yanmar sales and service dealers around the world.

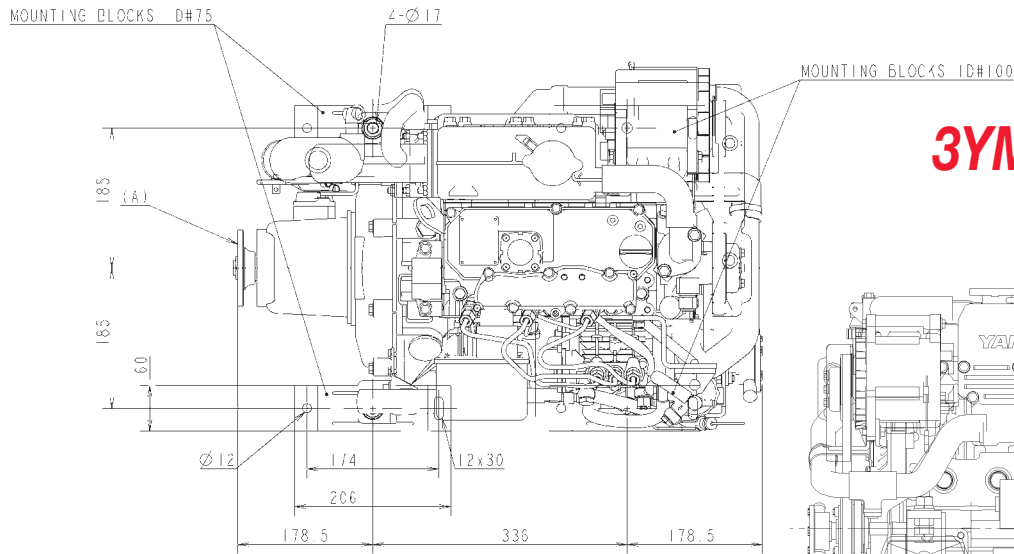
SAFE & SURE

Yanmar has re-invented Saildrives with double safety construction instead of single skin (see right). Should the outer ring become damaged and leak, you have the peace of mind of a second back-up seal and audio warning.

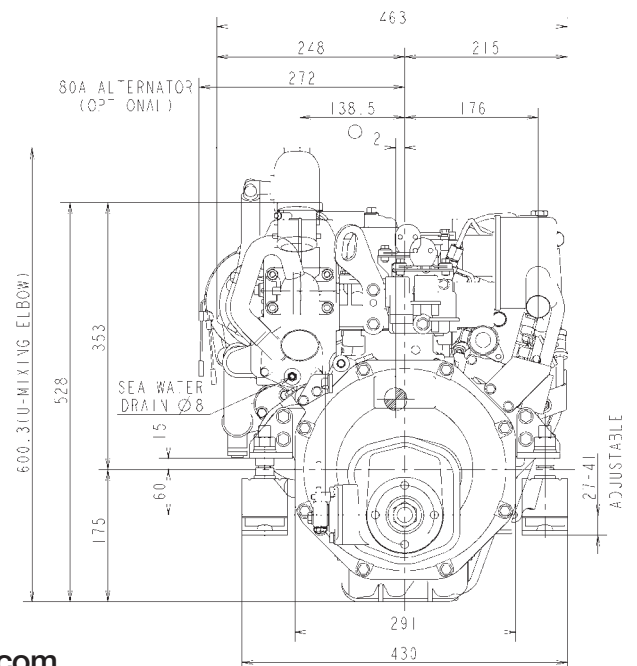
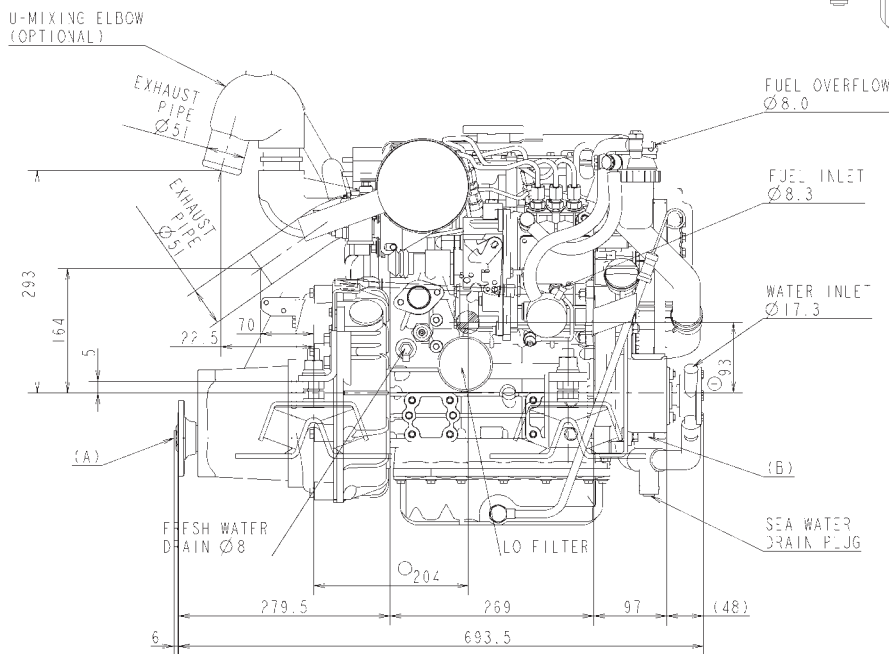
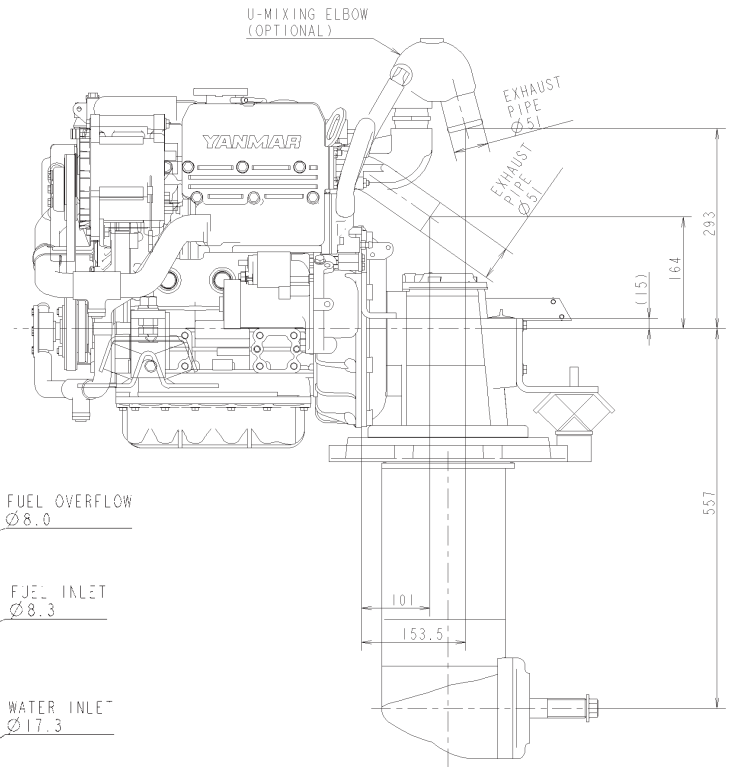


Ever Reliable Power

3YM20 with KM2P-1



3YM20 with Saildrive



Detailed downloads are available from www.yanmarmarine.com