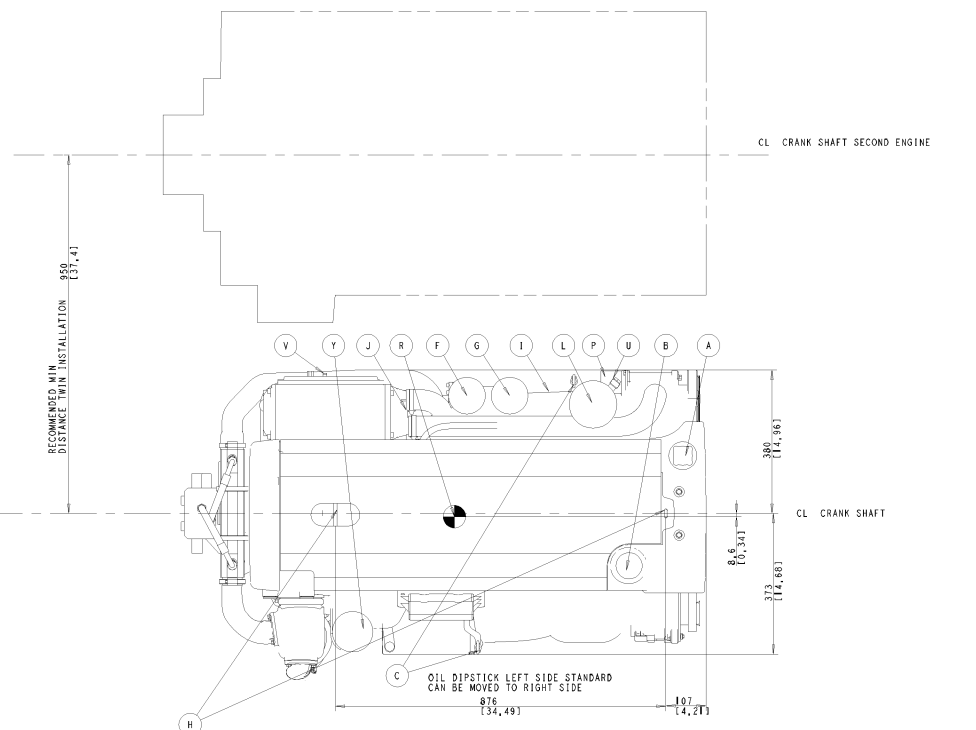
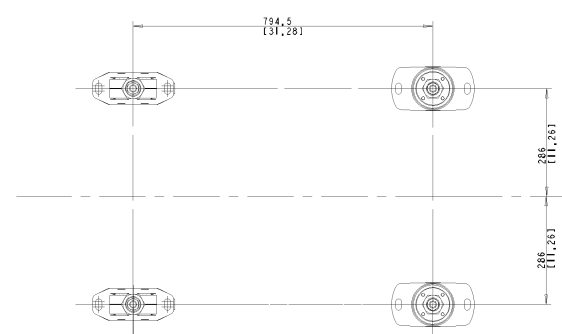
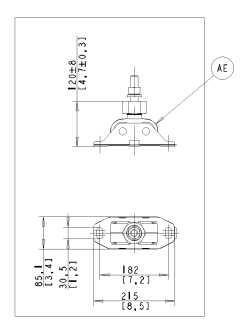
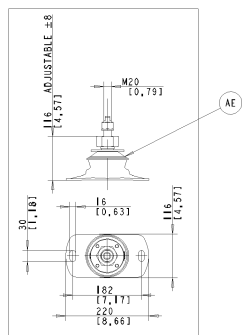


- A WATER FILLER CAP, FRESH WATER
- B OIL FILLER CAP, ENGINE
- C OIL DIPSTICK, ENGINE LEFT OR RIGHT SIDE MOUNTED
- D ENGINE CONTROL UNIT
- E OIL DRAIN PIPE, ENGINE Ø12,5
- F OIL FILTER MAIN
- G OIL FILTER BYPASS
- H LIFTING EYE
- I WATER DRAIN, FRESH WATER
- J WATER DRAIN, SEA WATER
- K AIR FILTER
- L FUEL FILTER
- M HOT WATER OUTLET Ø16
- N HOT WATER INLET Ø16
- O ELECTRICAL FUSES (ONLY 24V)
- P SEA WATER INLET Ø50
- Q OIL DIPSTICK REVERSE GEAR
- R CENTRE OF GRAVITY
- T OIL DRAIN REVERSE GEAR
- U FUEL INLET CONNECTION
- V FUEL RETURN TO TANK
- X ENGINE STOP
- Y CRANKCASE VENTILATION
- Z EXHAUST RISER Ø127 (5") (OPTION)
- AA SEA WATER PUMP
- AB EXHAUST ELBOW Ø127 (5")
- AC EXTRA ALTERNATOR
- AD DIAGNOSE CONNECTOR
- AE ELASTIC SUSPENSION (4x)
- AF DATALINK, SENDER AND AUX (2x)



SCALE 1:5

The design, fabrication and installation of this equipment shall be in accordance with the latest edition of the relevant standards and specifications of the International Maritime Organization (IMO) and the relevant national authorities. The manufacturer shall be responsible for the correct installation and operation of the equipment.

**VOLVO PENTA**  
 DIMENSION DRAWING  
 21912426 02